

Exercícios de fixação 2

Tronco Encefálico

M.Sc. Profª Viviane Marques

Coordenadora da Pós-graduação em Fonoaudiologia Hospitalar UVA

Docente do mestrado de HIV/AIDS e Hepatites Virais UNIRIO

Tutora da Residência Multiprofissional em Saúde do HUGG

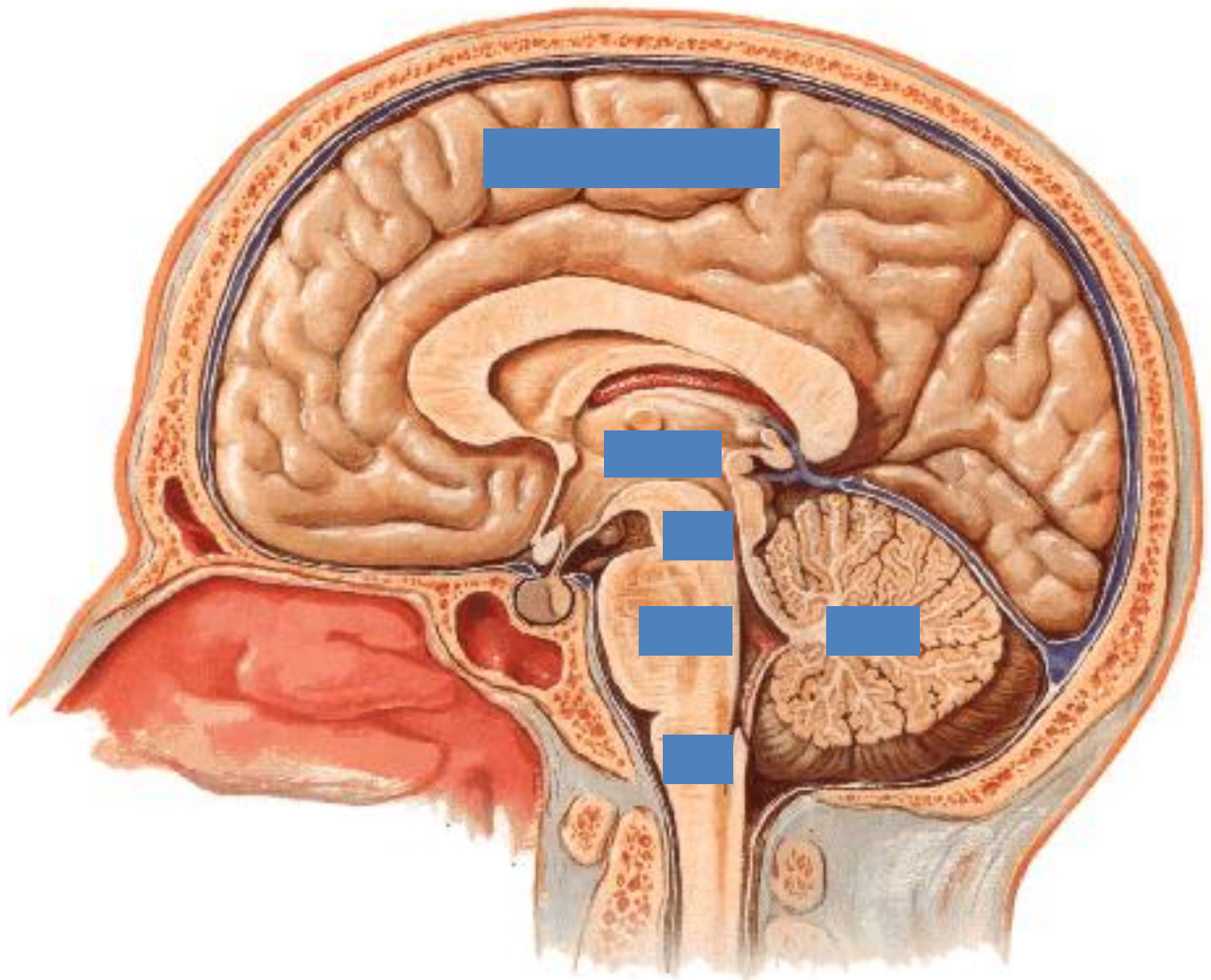
Chefe das equipes de Fonoaudiologia do Hospital Espanhol, CER Leblon e HUGG

Chefe da empresa FONOVIM Fonoaudiologia Neurológica LTDA

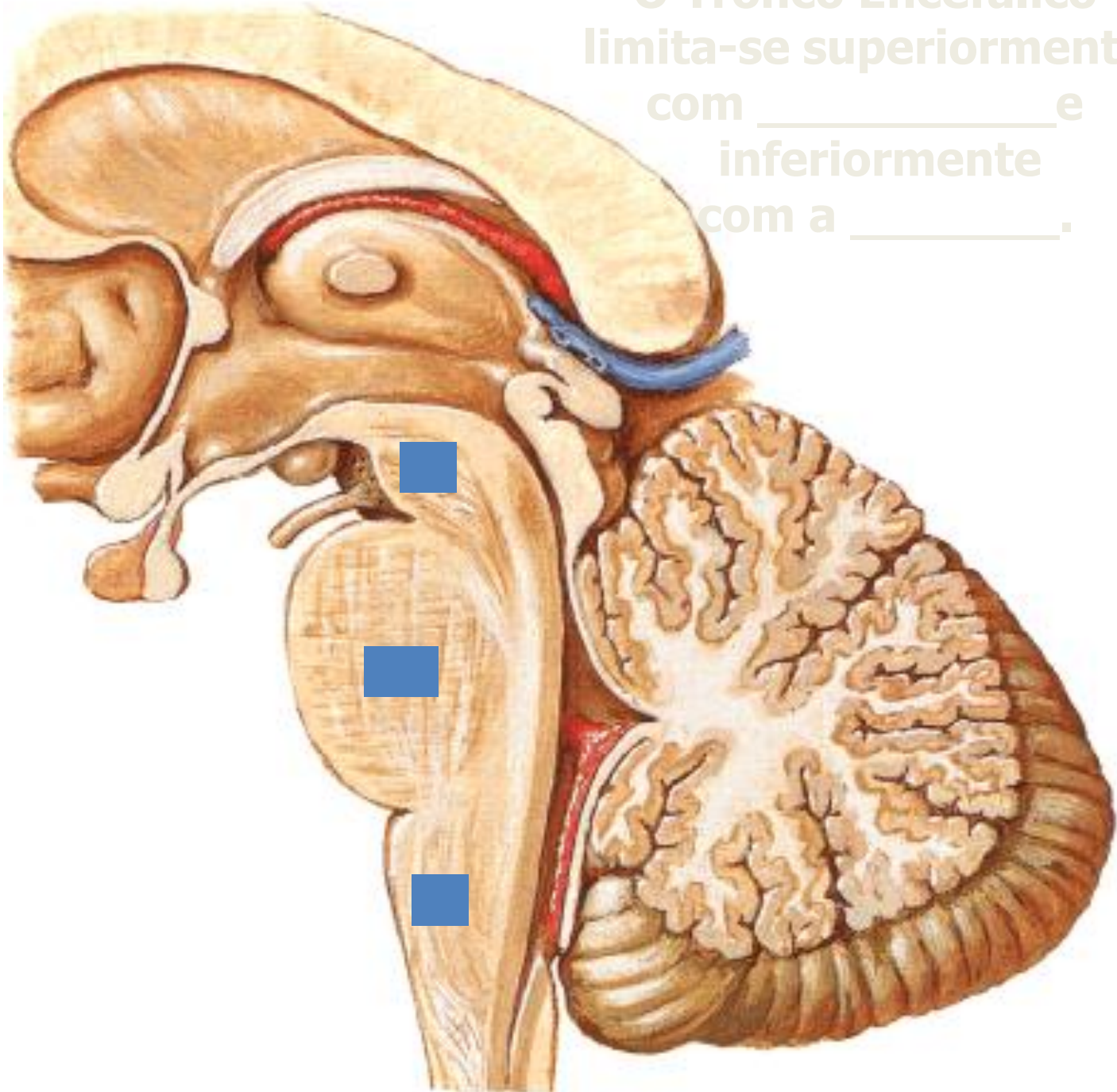
Presidente do Projeto Terceira Idade Saudável

<http://www.vivianemarques.com.br>

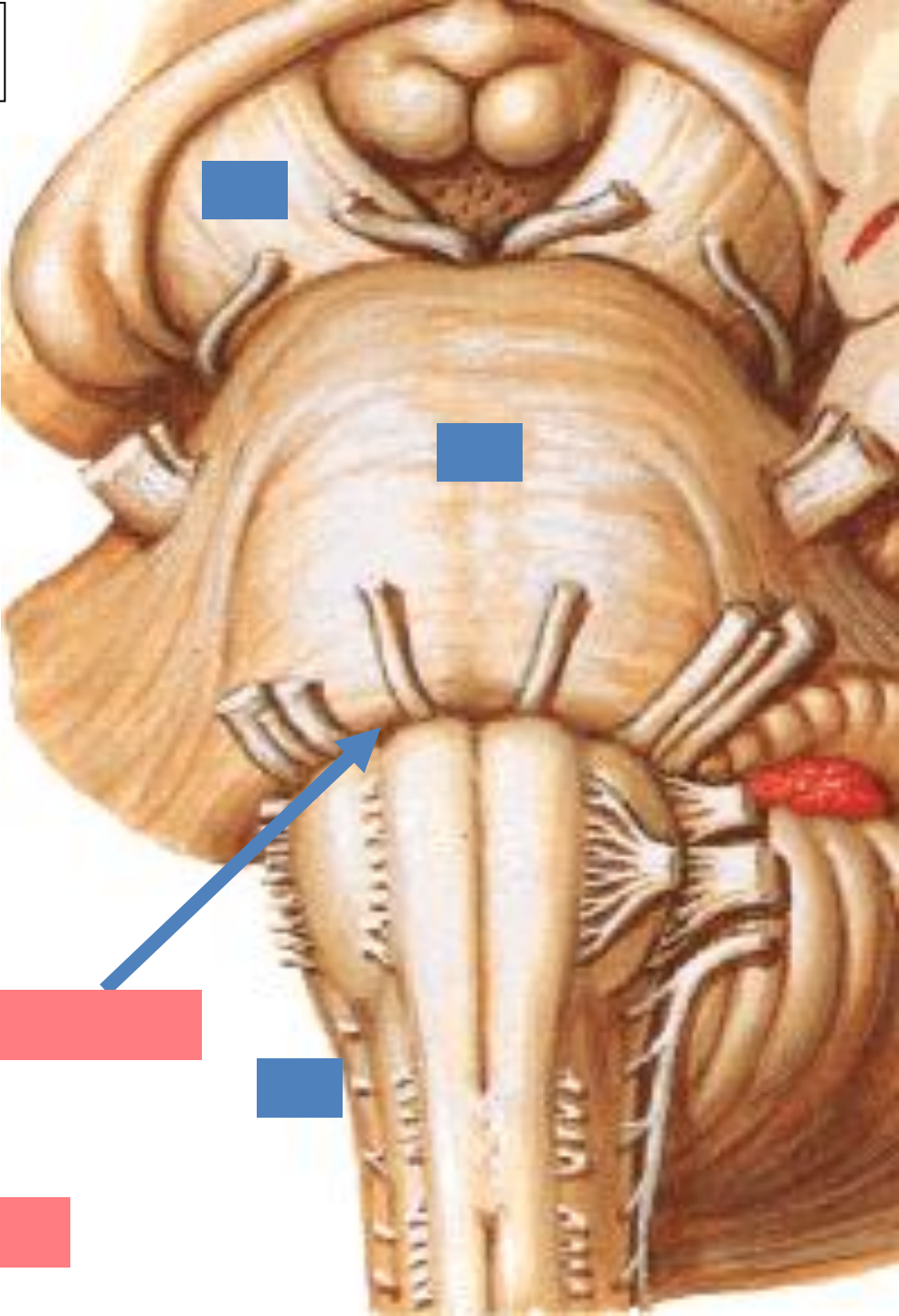
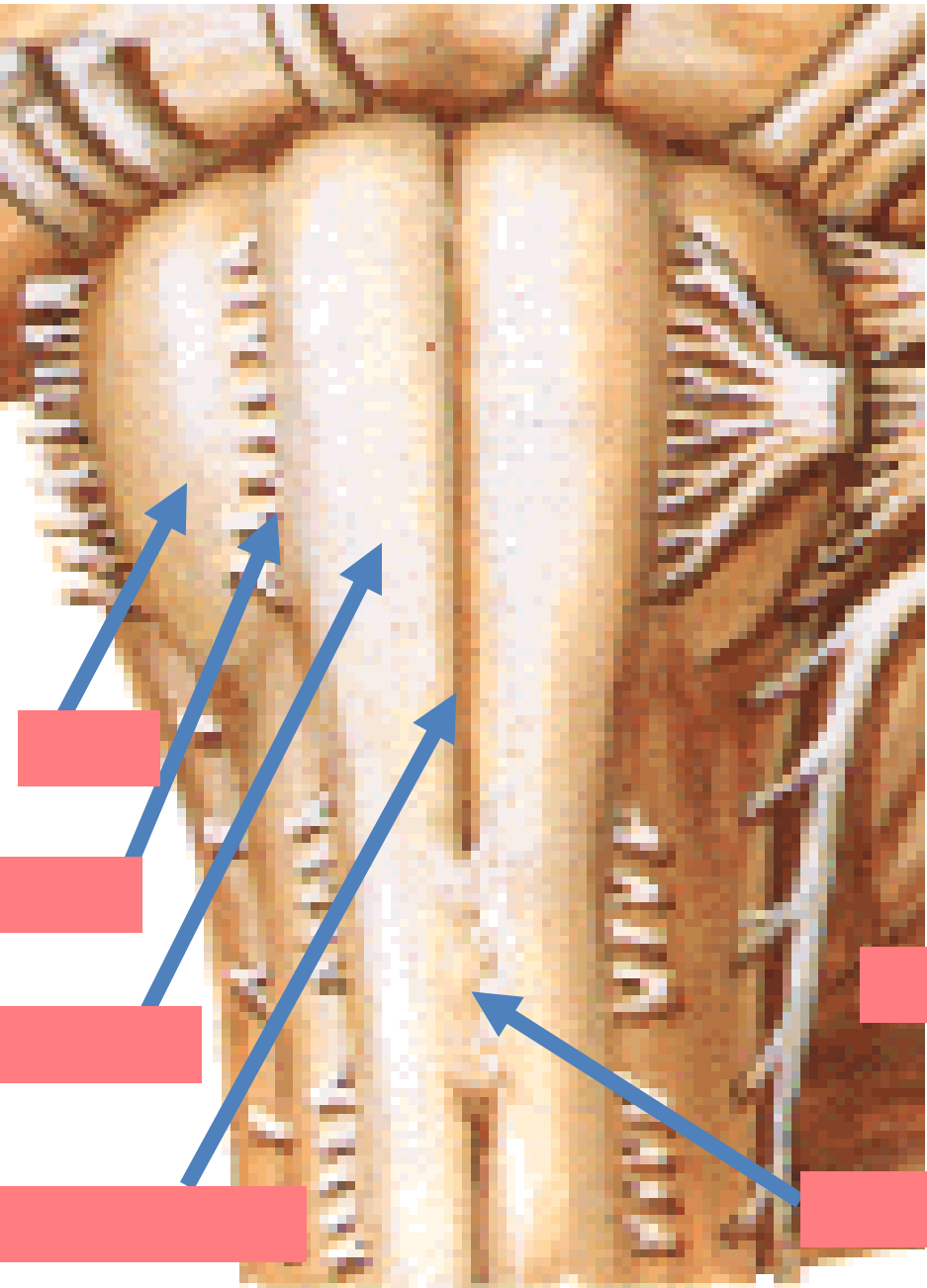
Secção Sagital - Vista Medial



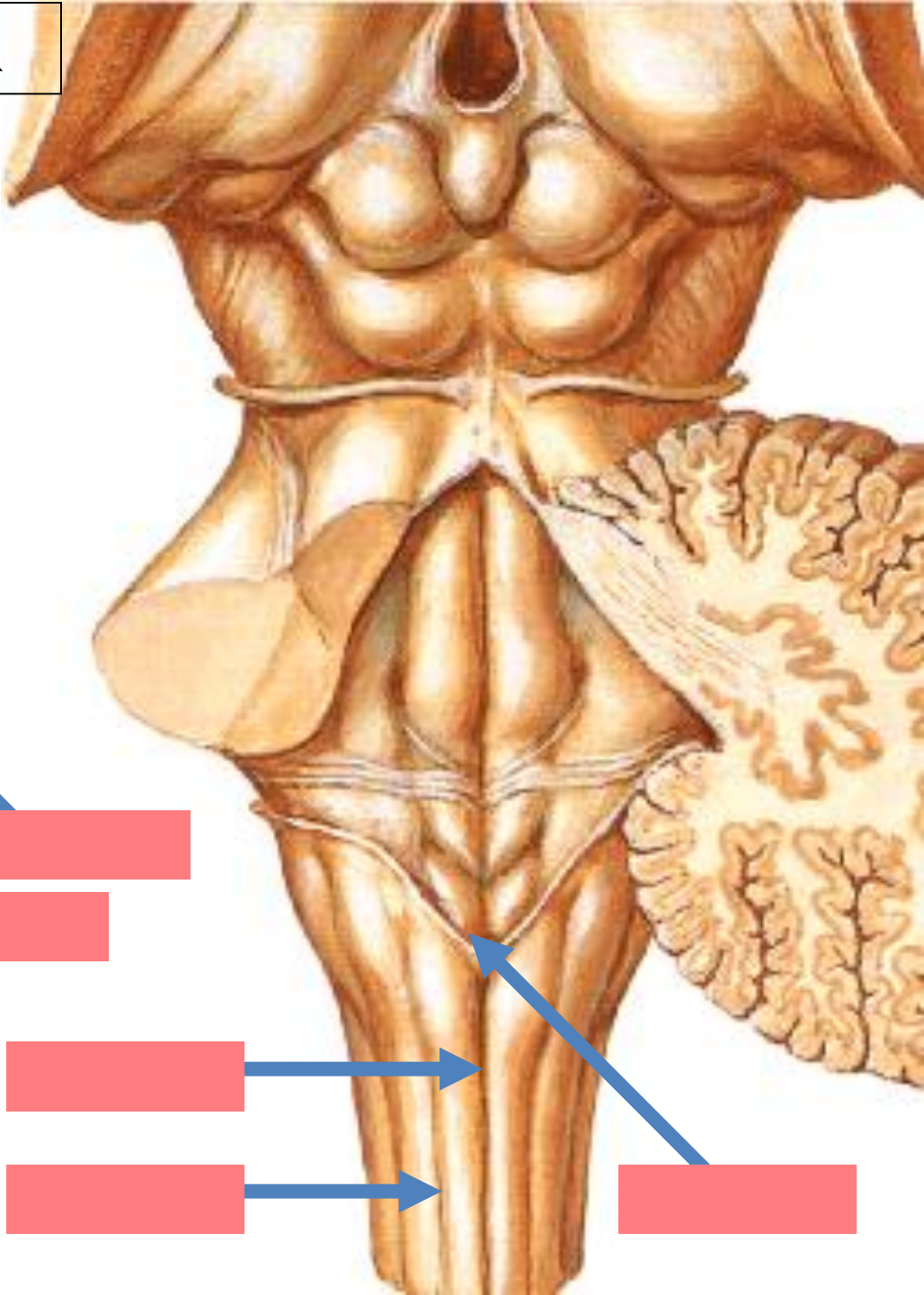
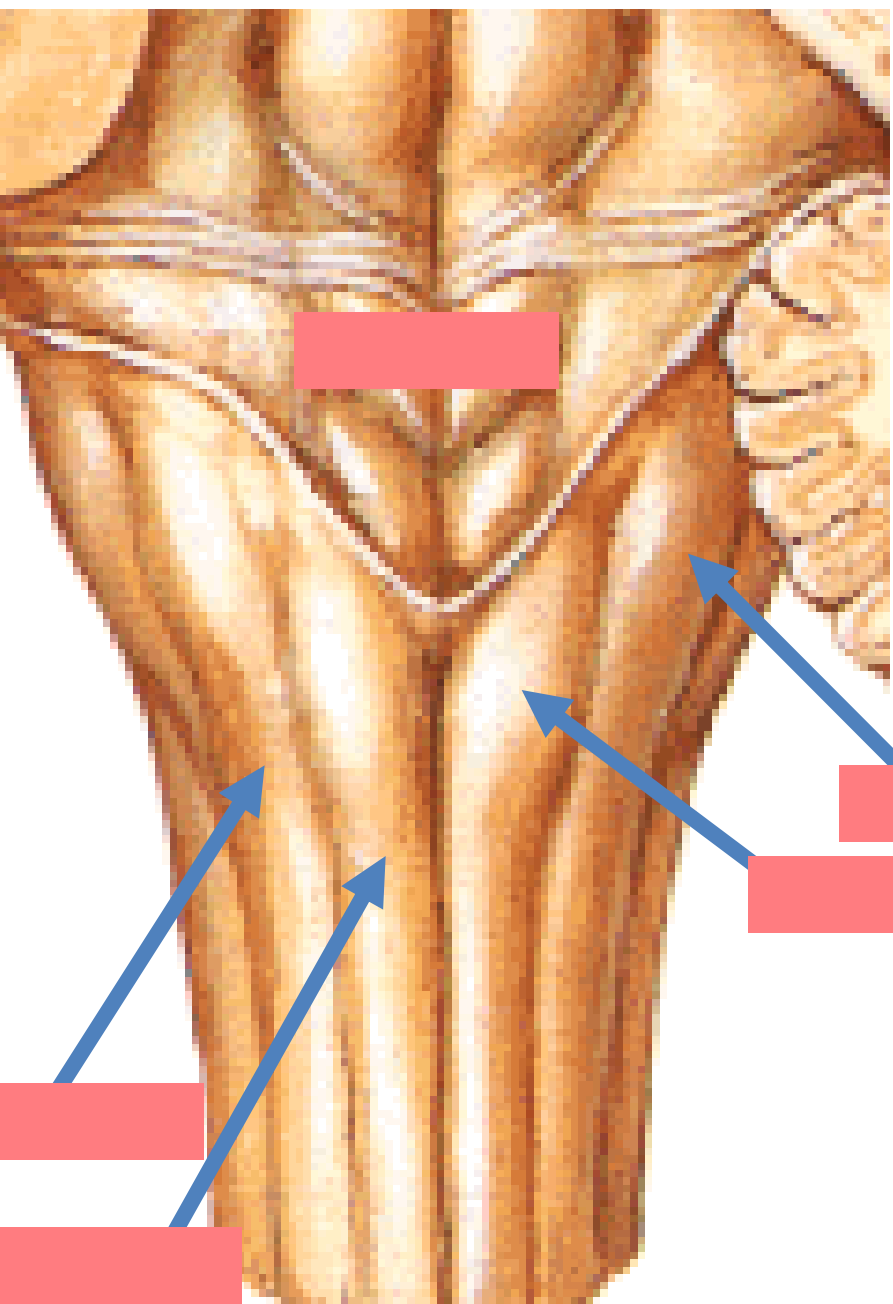
O Tronco Encefálico
limita-se superiormente
com _____ e
inferiormente
com a _____.



BULBO VISTA ANTERIOR



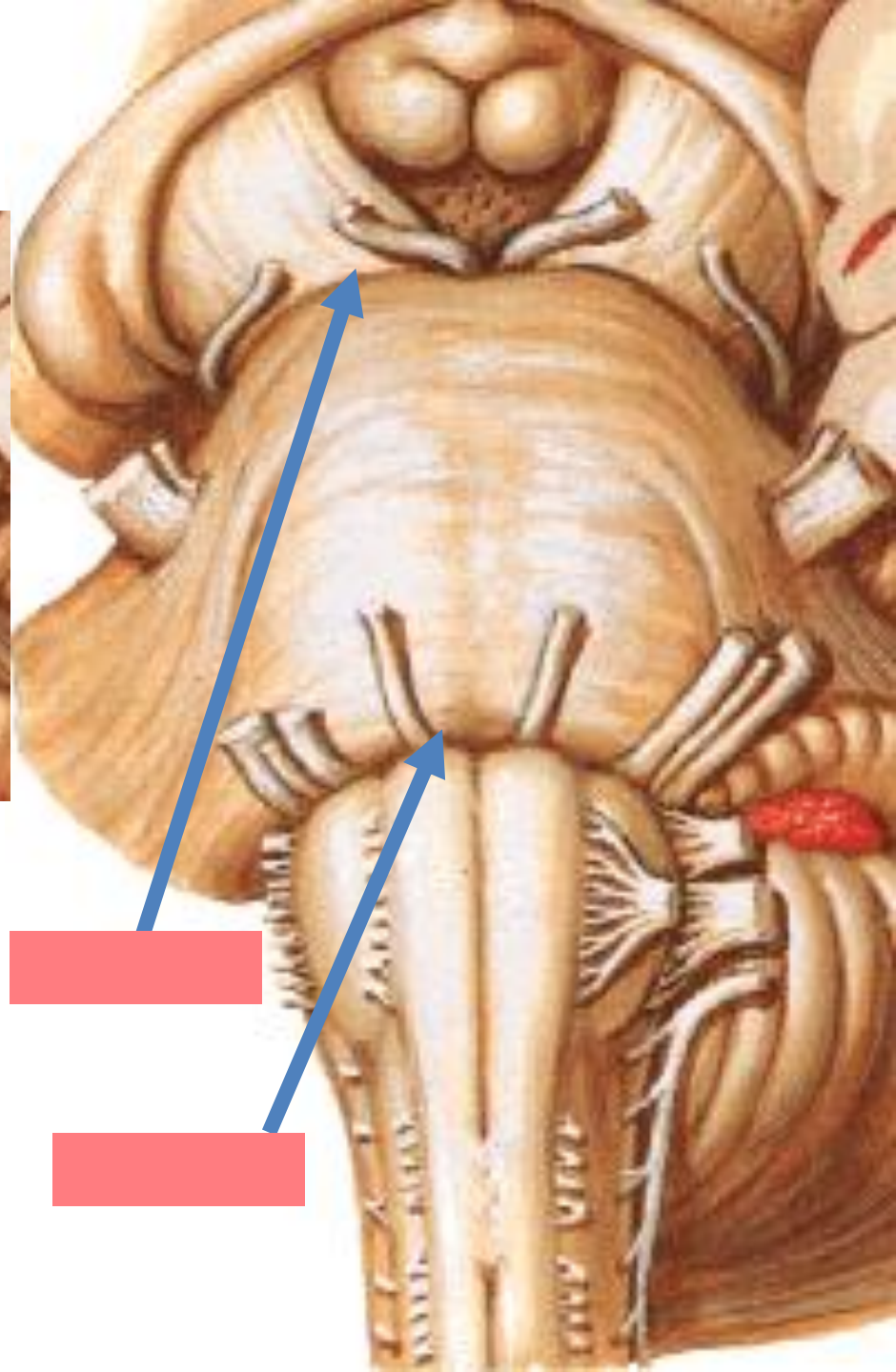
BULBO VISTA POSTERIOR



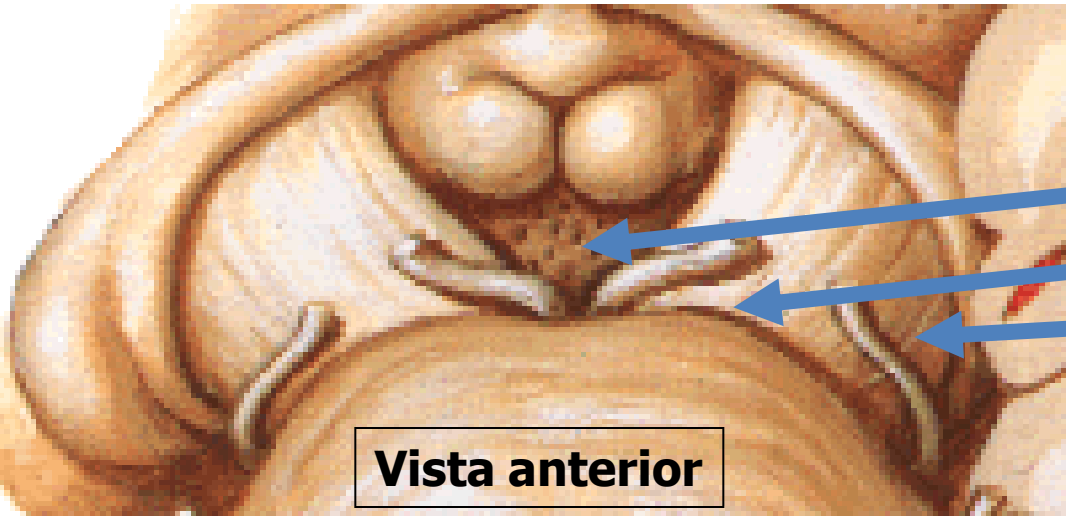
PONTE



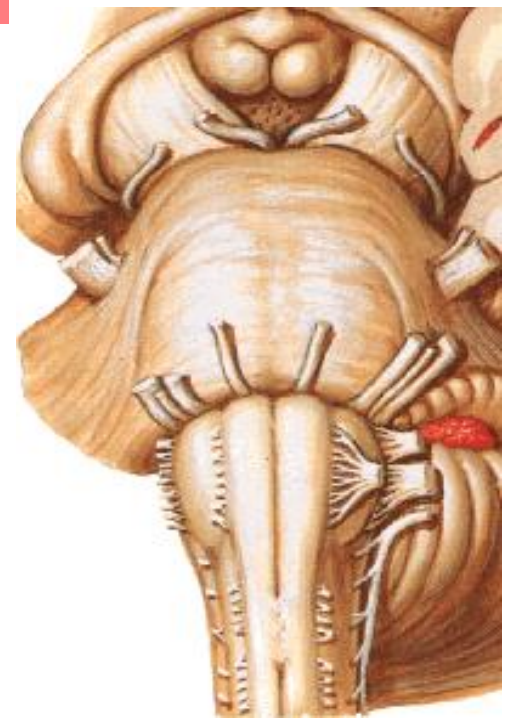
1	_____
2	_____
3	_____



Mesencéfalo



Vista anterior



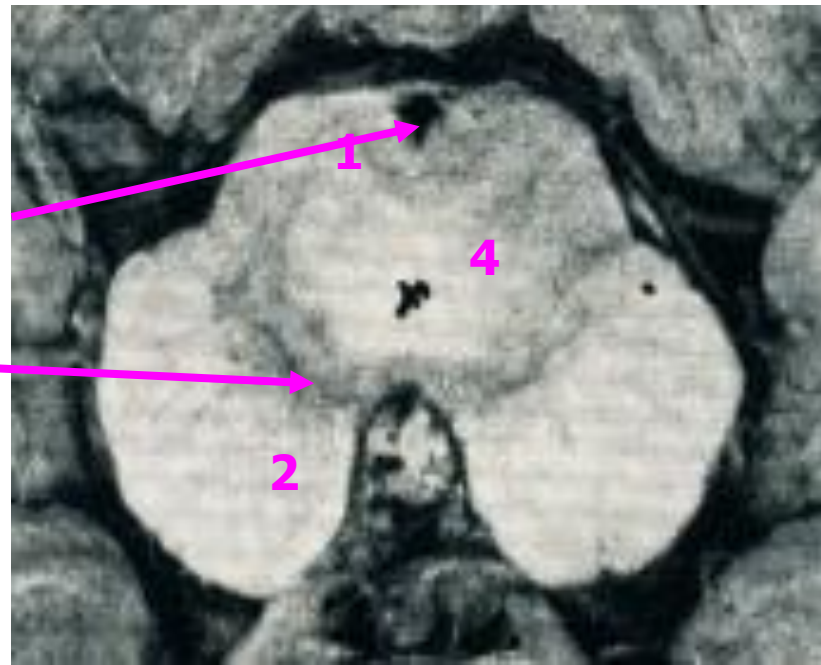
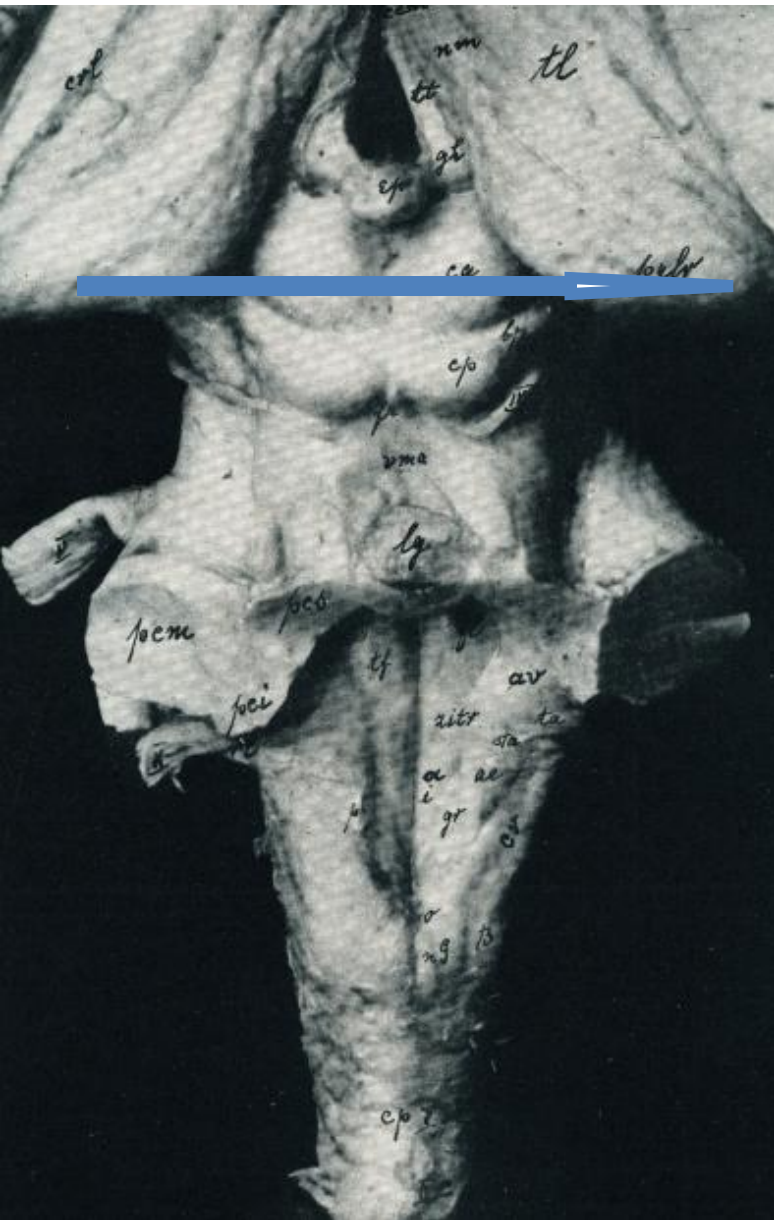
Vista Posterior

Estrutura Interna do Mesencéfalo

Nível Mesencefálico Superior

Corte 1

1. _____
2. _____
3. _____
4. _____
5. _____



Cuide do seu cérebro!!!

Estude!!!

